



## TreAdvisory GmbH List of Blood Chemistry Analysers

### Brief Company Profile

TreAdvisory is a Trade and Research firm composed of a team with a long-standing research experience in relation to Foreign Direct Investment (FDI), market studies and supply chains distribution. TreAdvisory provides leading-edge professional expertise with a clear operations/owner's perspective. We have a hands-on-experience and established networks to private sector players, in both Kenya and Germany.

### Our Purpose - Your Benefit

Understanding ourselves as both services and products provider in sectors within public health, agriculture, and green energy consultancy. As such, our focus is in two main activities namely: *a) Economic Research and Market Trend Analysis and b) Export Trade, focusing on Medical devices, Farm Equipment and Solar Energy.*

Our esteemed Clients do not only benefit from our international networks and experience but also value our multidisciplinary approach. Be it the market studies and planning of an appropriate new market entry strategy or the analysis of an economy's market potential, or the supply of high-quality equipment, we always keep the full picture in mind.

From collecting primary market data and economic feasibility assessments to preparing technical reports and facilitating exports/investment, we cover the complete range of services.

### Mission

Combining operational background and our international experience with professionalism towards workable innovation and modern technology, it is our mission to contribute strategically to the success and competitiveness of our Clients' projects.

**TreAdvisory GmbH** is partnering with **ROBERT RIELE GmbH & Co KG**, a German company engaged in the development, production and distribution of photometers-analytical instruments which are mainly used in clinical chemistry, but also in food and water analysis.

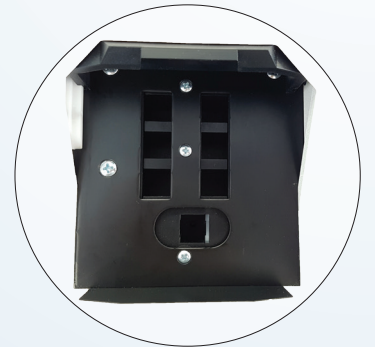


# RIEILE

## Photometer 4040<sub>V5+</sub>

- Manual photometric system for standard cuvettes
- NEW! With long lifetime LED technology
- Temperature controlled measuring cell and dry incubation block with 6 positions
- Reagent-open system with high capacity for programmable methods
- Teach-in capability for reagent applications via touchscreen
- Bar code reader system for an easy handling of patient data
- Minimum measuring volume 500 µl, reducible to 250 µl
- Future-proof operating system can easily be upgraded

NOW WITH LED



**RIELE**

ROBERT RIELE GmbH & Co KG  
Kurfuerstenstrasse 75-79  
13467 Berlin  
Germany  
Tel: +49 (0)30 404 40 87  
Fax: +49 (0)30 404 05 29  
e-mail: info@riele.de  
www.riele.de

# Photometer 4040<sub>V5+</sub>

**Type**

Single-beam filter photometer

**Light Source**

LED with long lifetime

**Wavelength**

340 nm and 390nm - 730 nm

**Wavelength Selection**

Automatic via 9-position filter wheel : 6 standard interference filters: 340 nm, 405 nm, 492 nm, 546 nm, 578 nm, and 623 nm;  
3 positions for optional filters of choice

**Photometric Range**

0 - 2.5 A

**Cuvette System**

Normal standard cuvettes (macro or semi-micro, disposable or special optical glass)

**Temperature Control**

Measuring cell as well as dry incubation block with 6 positions temperature controlled by electrical thermostat at 37 °C

**Operator Interface**

Touchscreen for direct functions and alphanumerical inputs

**Data Presentation**

Graphic display: white characters or symbols, blue background, lighted, resolution 240 x 128 dots

**Integrated Printer**

Thermal printer, 24 characters per line

**Languages**

English and German/ Indonesian/ Russian/ Spanish/ French

**Memory**

- General operating software can be updated by PC
- Reagent-open system with capacity for up to 231 programmable methods
- Data import by touchscreen or PC
- Up to 50 nonlinear calibration curves with max 20 sets of points can be stored

**Signal Port**

- Serial port for connection to an external printer and/or PC
- for connection of a bar code reader

**Data Logging**

Up to 1000 results can be saved in the memory automatically

**Measurement Procedures**

- Absorbance
- End point with factor, standard or multiple standards, with or without reagent blank and/ or sample blank
- Bichromatic end point
- Kinetics with factor, standard or multiple standards, with or without blank
- Fixed time with factor, standard or multiple standards, with or without reagent blank
- Turbidimetry with optional timer function
- Single, double and triple determinations
- Curve fitting for nonlinear standard curves
- Free hemoglobin in combination with optional interference filters

**Quality Control**

Up to 50 methods can be controlled with two control serums, Levey Jennings plot

**Measuring Time**

- Kinetic: variable from 3 - 19 deltas, time per delta 3 - 255 s
- Fixed time: variable from 0 - 1800 s

**Delay Time**

Programmable from 0 - 1800 s

**Mains Supply**

Range: 100 VAC up to 240 VAC at 50/60 Hz

**Dimensions**

Length 33 cm x width 34 cm x height 18 cm

**Weight**

4.8 kg

**Marking**



# RIEILE

## Photometer 5010<sub>V5+</sub>

- Semi-automated photometric system
- NEW! With long lifetime LED technology
- Effective temperature regulation system
- Flexible cuvette concept, interchangeable flow-through or standard cuvette
- Teach-in capability for reagent applications via touchscreen
- Bar code reader system for an easy handling of patient data
- Minimal sipping volume 250 µl
- Double-secured liquid control with infrared bubble detector
- Future-proof operating system can easily be upgraded

NOW WITH LED



**RIELE**

ROBERT RIELE GmbH & Co KG  
Kurfuerstenstrasse 75-79  
13467 Berlin  
Germany  
Tel: +49 (0)30 404 40 87  
Fax: +49 (0)30 404 05 29  
e-mail: info@riele.de  
www.riele.de

# Photometer 5010<sub>V5+</sub>

**Type**

Semi-automatic, single-beam filter photometer

**Light Source**

LED with long lifetime

**Wavelength**

340 nm and 390 nm - 730 nm

**Wavelength Selection**

Automatic via 9-position filter wheel : 6 standard interference filters: 340 nm, 405 nm, 492 nm, 546 nm, 578 nm, and 623 nm; 3 positions for optional filters of choice

**Photometric Range**

0 - 3.0 A

**Cuvette System**

Micro flow cell: 32 µl, 10 mm light path interchangeable with normal standard cuvettes (macro or semi-micro, disposable or special optical glass)

**Temperature Control**

- Internal Peltier element, temperature variable, pre-adjusted to 25 °C, 30 °C and 37 °C
- Equilibration time for aspirated reaction mixture to reach 37 °C from ambient temperature: 15 s

**Aspiration System**

Built-in peristaltic pump driven by stepper motor, programmable aspiration volume controlled by infrared light barrier

**Sipping Volume**

- Minimum 250 µl, typically 500 µl up to 2000
- Separate setting of aspirate volume and wash volume

**Operator Interface**

Touchscreen for direct functions and alpha-numerical inputs

**Data Presentation**

Graphic display: White characters or symbols, blue background, lighted, resolution 240 x 128 dots

**Integrated Printer**

Thermal printer, 24 characters per line

**Languages**

English and French/ German/ Indonesian/ Russian/ Spanish

**Memory**

- General operating software can be updated by PC
- Reagent-open system with capacity for up to 231 programmable methods
- Data import by touchscreen or PC
- Up to 50 nonlinear calibration curves with max. 20 sets of points can be stored

**Signal Port**

- Serial port for connection to an external printer and/or PC
- for connection of a bar code reader

**Data Logging**

Up to 1000 results can be saved in the memory automatically

**Measurement Procedures**

- Absorbance
- End point with factor, standard or multiple standards, with or without reagent blank and/or sample blank
- Bichromatic end point
- Kinetics with factor, standard or multiple standards, with or without blank
- Fixed time with factor, standard or multiple standards, with or without reagent blank
- Turbidimetry with optional timer function
- Single, double and triple determinations
- Curve fitting for nonlinear standard curves
- Free hemoglobin in combination with optional interference filters

**Quality Control**

Up to 50 methods can be controlled with two control serums, Levey Jennings plot

**Measuring Time**

- Kinetic: variable from 3 – 19 deltas, time per delta 3 - 255 s
- Fixed time: variable from 0 - 1800 s

**Delay Time**

Programmable from 0 - 1800 s

**Mains Supply**

Range: 100 VAC up to 240 VAC at 50/60 Hz

**Dimensions**

Length 33 cm x width 34 cm x height 18 cm

**Weight**

5.0 kg

**Marking**